



Myrtle Walk, London, N1

BUTLER  STAG



Exceptionally well-located three bedroom flat set within a purpose-built development close to the attractions of Shoreditch and Hoxton overground station.



- Three Double Bedrooms
- Second Floor of a Secure Building
- Envious Location
- Furnished
- Long-Term Let
- Private Balcony
- Close to Hoxton Station
- Available Now!

Situated on the second floor and accessed via a secure entrance and a lift, this spacious property is well-proportioned throughout, comprising of three true double bedrooms, an inviting living space with a private balcony overlooking communal gardens, a separate kitchen, bathroom and WC.

Conveniently situated on Myrtle Walk, just north of Old Street, the location benefits from excellent transport links and close proximity to some of the capital's most popular social hotspots and amenities.

Well-suited to a family, a couple seeking work-from-home space or sharing professionals, this property is offered furnished and available immediately.

EPC Rating C
Council Tax Band C





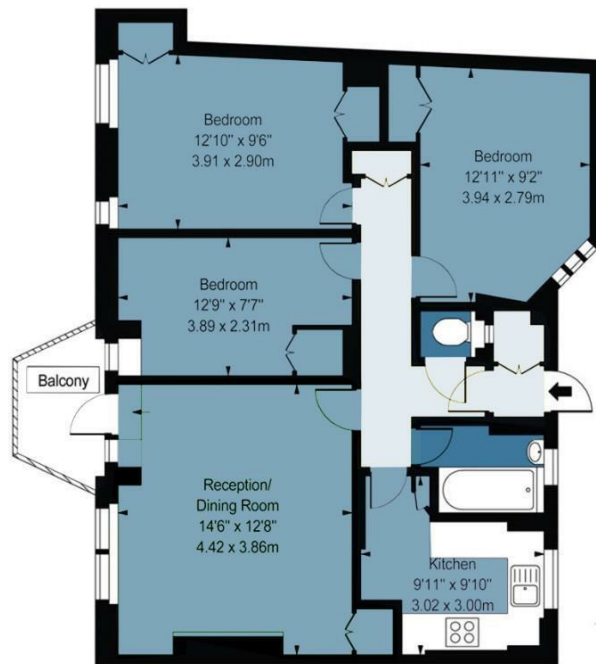
Myrtle Walk

Approx. Gross Internal Area 72.74 Sq M (783 Sq Ft)

BUTLER & STAG



Second Floor



Measurements are approximate and for illustration purposes only. While we do not doubt the accuracy and completeness, we advise you conduct a careful independent assessment of the property to determine monetary value.
© @modephoto.uk www.modephoto.co.uk

IMPORTANT NOTICE - These particulars have been prepared in good faith and they are not intended to constitute part of an offer or contract. We have not performed a structural survey on this property and the services, appliances and specific fittings have not been tested. All photographs, measurements, floor plans and distances referred to are given as a guide and should not be relied upon.

BUTLER & STAG

☎ 020 8102 1236

🏠 508 Roman Road, Bow, London, E3 5LU

✉ bow@butlerandstag.com

www.butlerandstag.uk